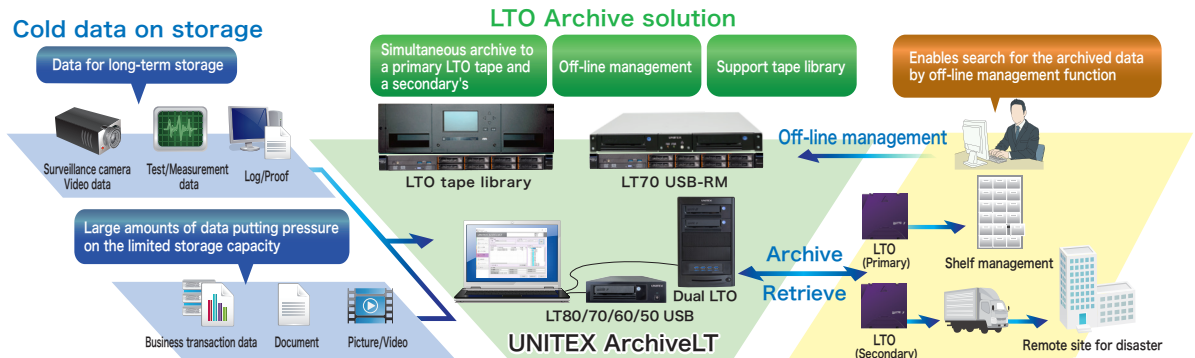


UNITEX ArchiveLT

Archive software which enables "high speed archive & retrieval to LTO/ HDD/Optical Disk Archive" and "off-line management function"

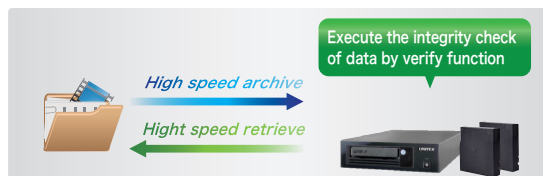


Features

• High speed archive & retrieve

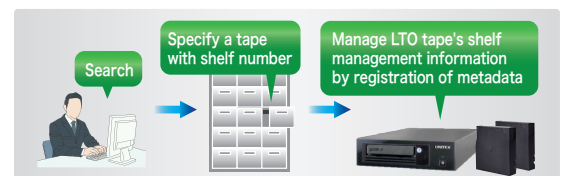
UNITEX ArchiveLT enables high speed data archive to make the maximum use of device's performance by UNITEX unique data transfer algorithm. It enables high speed data archive to not only LTO drive but also various disk storage such as HDD, SSD, and Optical Disk Archive*. In addition, UNITEX ArchiveLT has many functions for handling important data safely such as simultaneous archiving to multiple devices, automatic verification after archiving, encryption of LTO tapes, etc.

* An Optional license is required when you use Optical Disk Archive.



• Off-line management for the archived data

Data archived by UNITEX ArchiveLT is registered in the management information, and it can be searched off-line. You can check the contents of data and search your target data in less effort. And you can register up to 15 any metadata for each archived data. For example, you can easily make shelf management for lots of LTO cartridges by registering the location of LTO cartridge and data's information in metadata.



• Reliable Job History Management function

The job execution result for the important data asset is stored automatically. And you can check it in Job History Management window.

[Job History Management function]

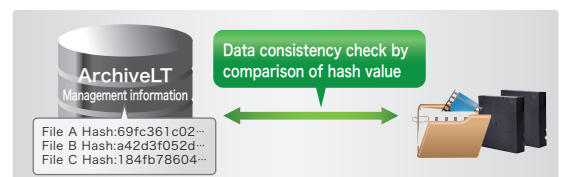
- Job execution result
- Job processing time
- Information of the input device/the output destination
- List of Job processing data
- Hash value (MD5/SHA-1)
- Performance information

* Enables to output them as a report file as well.



• Consistency check for the archived data

When data is archived in UNITEX ArchiveLT, hash value of each file is automatically registered in management information. Consistency check function enables to confirm that there is no change in the archive data by recalculating the hash value of the archive data and comparing with the hash value in management information.



• Automatic archiving schedule function (Optional)

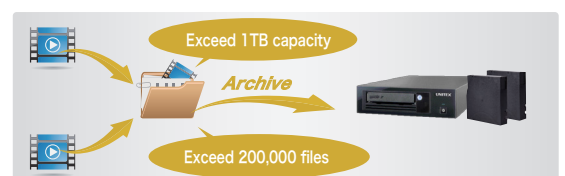
You can schedule and archive data automatically such as "Everyday at 6 o'clock", "Every Friday".

* An optional license is required to use the schedule function.



• Watch folder function (Optional)

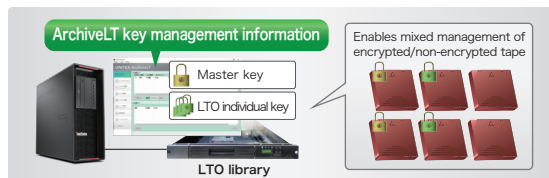
Automatic archiving when total folder capacity/total file numbers reach a designated value.



UNITEX ArchiveLT LTO Archive Software

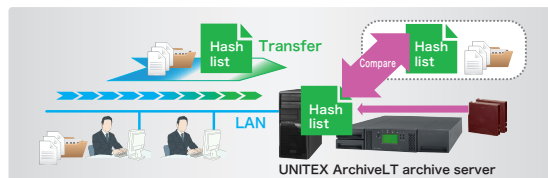
• LTFS hardware encryption function (Optional)

Encryption with a master key and an individual key. Enables mixed management of encrypted/non-encrypted tape



• Remote client function (Optional)

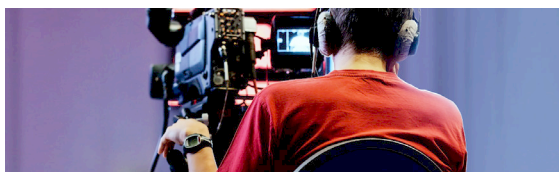
Enables archive/retrieval of data from a remote PC to LTO archive server



Various use

• Archiving large amounts of various data such as video data and surveillance camera data

Capacity of the video data is increasing to 4K/8K. And there are a variety of target management files such as video footage, project, metadata file, etc. in the video data. How to store and manage them, including other digital assets, is a challenge. UNITEX ArchiveLT solves it by data storage & management function in LTO that is reliable and cost effective.



• Off-line management for LTO data assets

Data archived by UNITEX ArchiveLT is registered in management information. And LTO assets stored in the past and LTO created by other software/system can be registered in management information and can be managed off-line collectively.

By using the off-line management function, you can easily search which data is stored and where it is stored without taking LTO out of the shelf, and you will be able to make effective use of information assets.



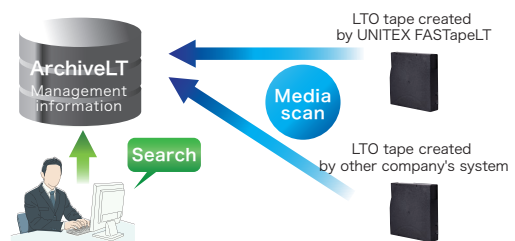
• Countermeasure for Ransomware

By archiving your important data to LTO and managing it off-line, you can minimize the security damage caused by Malware such as Ransomware. And UNITEX ArchiveLT enables you to retrieve the archived data easily whenever it is required.



Import media information from other software

You can add media information created by UNITEX FASTapeLT or other company's software to ArchiveLT media management information by scanning it. With this function, you can import media created by other software and manage it at off-line.



Operating environment requirements

Item	Support device and environment
CPU	Intel Core i3 or above (Recommended: Intel Xeon E3 4Core or above)
Memory	2GB or above (Recommended: 8GB or above)
Recommended Interface	USB3.0 or above *When connecting a USB device SAS 6Gbps or above *When connecting a SAS device
Display	XGA resolution or above
Support OS	Windows 7 (x86/x64) Windows 8 / 8.1 (x86/x64) Windows 10 (x86/x64) * Ver. 1607 or later Windows server 2008 R2 (x64) Windows Server 2012 / 2012 R2 (x64) Windows Server 2016 (x64) *Please contact us for OS not listed.
Support Device	LTO single drive LT80H/70H/60H/60/50H/50 (USB/SAS) Dual LTO series Flash memory / Disk storage SONY Optical Disk Archive ODS-D280U * *An optional license is required.
Support Media	LTO ULTRIUM cartridge (LTFS format, Tar format ¹⁾) Flash memory / Disk storage ²⁾ SONY Optical Disk Archive cartridge ODC3300R ³⁾ ¹⁾ Tar archive optional license is required. ²⁾ FAT32 / exFAT / NTFS / UDF format ³⁾ Optical Disk Archive optional license is required.