

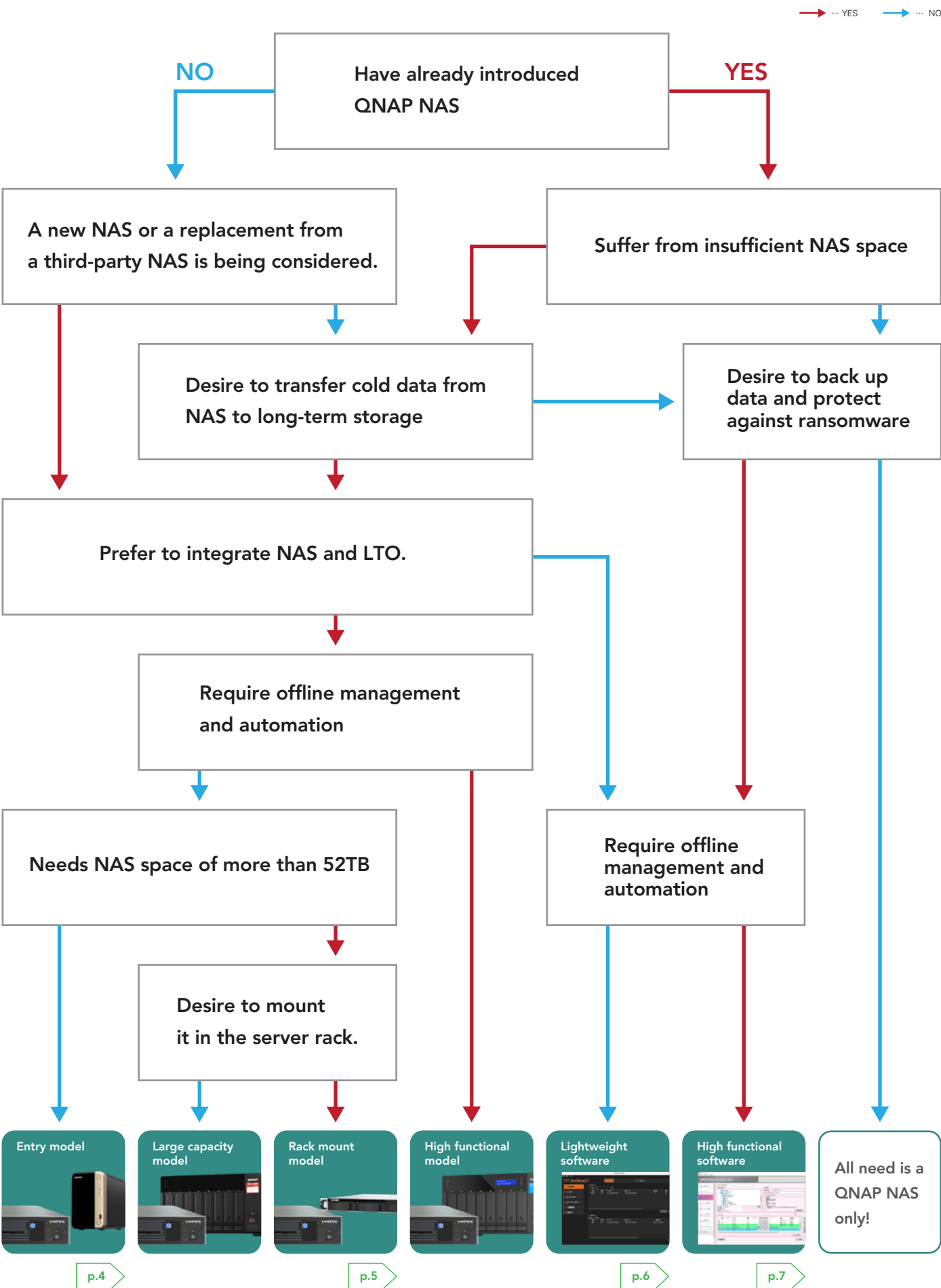
# “LONG-LIFE DATA” Begins Now

~Data will continue to alive with work~



For Any Business,  
For Any Success.

# Select from the current NAS environment, data storage problems, and desired functions



# Select from key applications, NAS+LTO usage scenarios, and solution examples

## For long-term storage of data without a computer

Build an LTO archiving system on a QNAP NAS to provide file server functionality and LTO archiving with a single NAS



### Recommended Model



## BCP measures for NAS data (Ransomware Protection, Remote Storage, Long-term Storage)

Automatically archiving from the back-up/secondary NAS to LTO and LTO media shelf management ensure the safe and reliable storage of your valuable data.



### Recommended Model



## Archive video data of surveillance cameras

The most recent video data is kept on NAS, and the older video are automatically archived by LTO so that the past video can be played and reused.



### Recommended Model



## Multi-NAS Integrated LTO Archiving

A single NAS and LTO drive that automatically archives data from multiple NAS can be managed in an integrated manner.



### Recommended Model

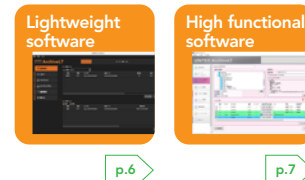


## Archive the data from the current NAS to LTO

Build an LTO archiving environment easily by adding LTO drives and archiving software to the NAS of the existing environment.



### Recommended Model

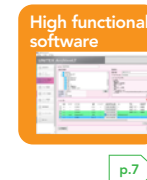


## Archiving from another system with an API linkage function

API linkage function and the automated transport function of the LTO library allow archiving and retrieval operations without human intervention from other systems.



### Recommended Model



Cost-focused entry model

# LT90AQ-TS264

Components  
LTO Drive : LT90H USB  
Software : ArchiveLT QNAP (Lightweight)  
NAS : TS-264



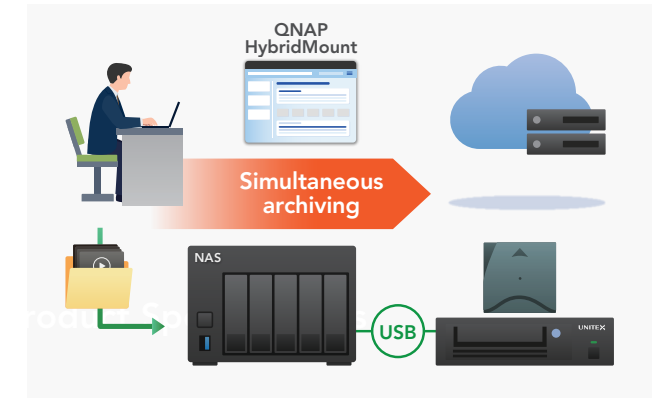
Overview

- All-in packaged system consisting of QNAP NAS, LTO drives, and archiving software
  - The LTO archiving system is built on a QNAP NAS, and file server function and LTO archiving are realized by only one NAS.
  - An entry model that reduces initial costs by using QNAP NAS as a data-archiving and operating terminal to LTO.
- Using QNAP "HybridMount" to Store Data from Another NAS or Cloud Services p.6
- Large-capacity, long-term storage, offline backup for ransomware protection with LTO
- The world's only direct connection between NAS and LTO via USB

Examples of solutions

Supports major cloud services

"Cloud-linked LTO archiving"



- Archiving System Linked with Cloud Using QNAP "HybridMount" p.6
- Simultaneous archiving to LTO and cloud
- Hot data is shared on the cloud, and data that has elapsed over time is archived to LTO to reduce cloud maintenance costs.

Product Specifications

Available for models other than the following 4. For details, contact us.

|   | Entry model         | Large capacity model  | Rack mount model    | High functional model |
|---|---------------------|-----------------------|---------------------|-----------------------|
| CPU                                     | 4C/4T 2.9GHz        | 4C/8T 2.2GHz          | 4C/4T 3.4GHz        | 6C/12T 4.4GHz         |
| Memory (Max)                            | 8GB (16GB)          | 8GB (64GB)            | 8GB (16GB)          | 32GB (64GB)           |
| Capacity                                | 60TB (30TB x 2)     | 240TB (30TB x 8)      | 120TB (30TB x 4)    | 240TB (30TB x 8)      |
| Ethernet                                | 2.5GbE x 2 port     | 2.5GbE x 2 port       | 2.5GbE x 2 port     | 2.5GbE x 2 port       |
| Dimensions ( Height x Width x Depth mm) | 165 x 105 x 226.5   | 180.2 x 329.3 x 279.6 | 43 x 430 x 292.1    | 188.2 x 329.3 x 280.8 |
| Weight                                  | 2.61kg              | 8.3kg                 | 4.51kg              | 8.95kg                |
| Support LTO Drive                       | LTO-7, LTO-8, LTO-9 | LTO-7, LTO-8, LTO-9   | LTO-7, LTO-8, LTO-9 | LTO-7, LTO-8, LTO-9   |

Rack-mount models for mid-range configurations

# LT90AQ-TSh765eU

Components  
LTO Drive : LT90H USB  
Software : ArchiveLT QNAP (Lightweight)  
NAS : TS-h765eU



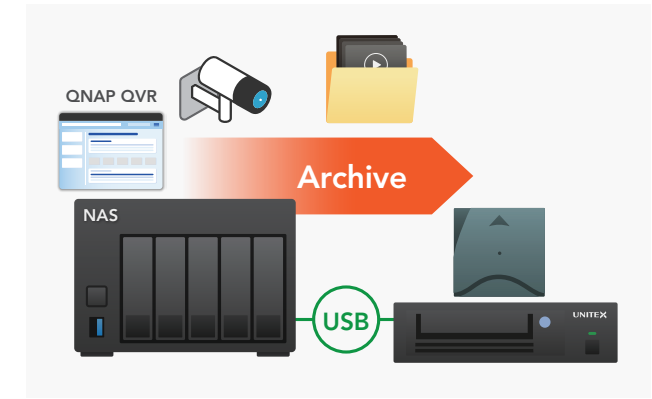
Overview

- All-in packaged system consisting of QNAP NAS, LTO drives, and archiving software
  - The LTO archiving system is built on a QNAP NAS, and file server function and LTO archiving are realized by only one NAS.
  - Supports a rack-mounted midrange configuration. Using QNAP "HybridMount" to Store Data from Another NAS or Cloud Services.
- Using QNAP "HybridMount" to Store Data from Another NAS or Cloud Services p.6
- Large-capacity, long-term storage, offline backup for ransomware protection with LTO
- The world's only direct connection between NAS and LTO via USB

Examples of solutions

Efficient storage of video data

"Surveillance camera solutions"



- Using QNAP "QVR" series. Building a surveillance camera system on NAS
- The most recent video is stored on the NAS, older footage is archived in LTO
- If you want to reuse past video, you can retrieve them from LTO to NAS for playback/reuse.

Product Specifications

Available for models other than the following 4. For details, contact us.

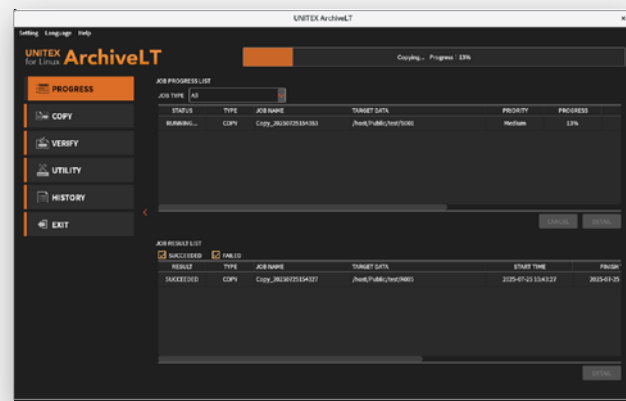
|   | Entry model         | Large capacity model  | Rack mount model    | High functional model |
|---|---------------------|-----------------------|---------------------|-----------------------|
| CPU                                     | 4C/4T 2.9GHz        | 4C/8T 2.2GHz          | 4C/4T 3.4GHz        | 6C/12T 4.4GHz         |
| Memory (Max)                            | 8GB (16GB)          | 8GB (64GB)            | 8GB (16GB)          | 32GB (64GB)           |
| Capacity                                | 60TB (30TB x 2)     | 240TB (30TB x 8)      | 120TB (30TB x 4)    | 240TB (30TB x 8)      |
| Ethernet                                | 2.5GbE x 2 port     | 2.5GbE x 2 port       | 2.5GbE x 2 port     | 2.5GbE x 2 port       |
| Dimensions ( Height x Width x Depth mm) | 165 x 105 x 226.5   | 180.2 x 329.3 x 279.6 | 43 x 430 x 292.1    | 188.2 x 329.3 x 280.8 |
| Weight                                  | 2.61kg              | 8.3kg                 | 4.51kg              | 8.95kg                |
| Support LTO Drive                       | LTO-7, LTO-8, LTO-9 | LTO-7, LTO-8, LTO-9   | LTO-7, LTO-8, LTO-9 | LTO-7, LTO-8, LTO-9   |



# ArchiveLT QNAP

+ LTO Drive

Lightweight version



Install from  
QNAP App Center



## Overview

- Lightweight archiving software specializing in copying, which can be installed in an inexpensive QNAP NAS
- Operates on Ubuntu Linux Station and supports GUI/CUI manipulation

## Functions

**High-speed archive & retrieval**

Unique data-transfer algorithms maximize LTO I/O performance and allow fast archiving and retrieval.

**Simultaneous archive**

Archive to up to 4 destinations simultaneously. Backup media can be created at almost the same time as archiving to master media.

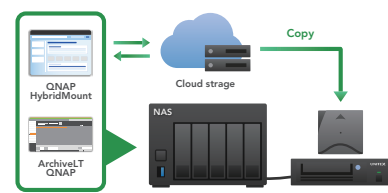
**History management**

The processing results are automatically saved and can be checked on the history management screen. On the history detail screen, you can check the detailed information of the job history and output the job report.

**Consistency Check**

Automatically calculates hash values during archiving and stores them as management information. After writing, the data is automatically reloaded and compared with the original data (automatic validation function).

## QNAP "HybridMount" alignment



- QNAP "HybridMount" enables data storage from another NAS or cloud service
- Supports major cloud services
  - Dropbox/Google Cloud/OneDrive/Wasabi, etc.

## LTFs formatting and auto-mounting of LTO tapes, and a utility function to check drive information

### What is LTFs ?

- Linear Tape File System(LTFs) is an innovative file system that allows LTO tapes to be used like external hard disks.
- From the regular File Explorer, data can be stored and retrieved by dragging and dropping, and data can be managed easily and flexibly without requiring special knowledge or special software.
- LTFs is an international standard that ensures compatibility between different vendors. This enables long-term secure storage and access of data.

## For LTFs format storage in Linux [ArchiveLT for Linux]

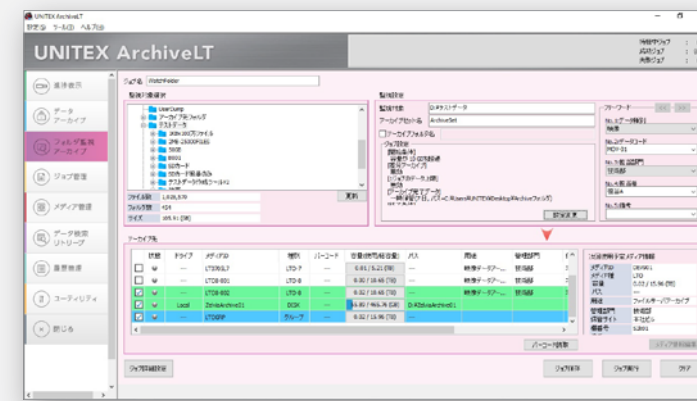
- Data-copying software that provides high-speed copying and validation to LTO in Linux
- 対応OS : Red Hat Enterprise Linux 8 (x86\_64) / Red Hat Enterprise Linux 9 (x86\_64) / AlmaLinux OS 8 (x86\_64) / AlmaLinux OS 9 (x86\_64) / Rocky Linux 8 (x86\_64) / Rocky Linux 9 (x86\_64) / Ubuntu 22.04 LTS (x86\_64) / Ubuntu 24.04 LTS (x86\_64)



# ArchiveLT for Windows

+ LTO Drive

Sophisticated version



Builds and installs  
a virtual OS for operation



## Overview

- Sophisticated archive software with offline administration and archive automation using DB

## Functions

### High-speed archive and retrieval, Simultaneous archive, History management, Consistency Check

**Watch folder function**

Monitor the capacity and number of files in a specific folder and automatically archive based on preset conditions. Automatically archive when the amount of free storage space on which the monitored folder resides falls below a preset threshold.

**Automatic archiving schedule function**

Automatically archive specific folders and files based on a pre-set schedule. Archiving can be performed during business downtime, such as at night.

**Incremental Archive**

Compared to archived data, only differences and increments are archived. Files and folders that are being edited during the job execution will be skipped and processed during the next archiving. You can specify the number of days that have elapsed since the last update and automatically delete archived data from the archive source.

**Metadata registration**

Assign media tags to archive media. Up to 15 free words are granted to archived data. Leverage metadata for easier offline management and improved searchability.

**Management Information Replication**

Replicates media management and archiving information to registered destinations. Real-time replication and full replication every 24 hours ensure consistency with the source.

**Recording and display of performance information**

Graphical display of data transfer rate for each archive source and destination. Not only during job execution, but also past performance information can be referenced from the job history. It can also be used for troubleshooting, such as investigating processing speed bottlenecks.

## Operating environment requirements

|                       | Supported Devices / Environments   |
|-----------------------|--|
| CPU                   | Intel Core i3 or higher (Recommended : twice the number of CPU cores as LTO drives)  |
| Memory                | 4GB or more (8GB or more recommended) In addition, 1GB of memory is required for every 1 million files on a single LTO (LTFs) tape. (When using multiple LTO devices simultaneously, memory is required for the number of LTO tapes used concurrently.)                                    |
| Storage               | 1GB of local storage is required for every 1 million files managed.  |
| Display               | A display capable of WXGA (1,280 × 768) resolution or higher.  |
| Recommended Interface | USB 3.0 or higher (for connecting USB devices) / SAS 6Gbps or higher (for connecting SAS devices)  |
| Supported OS          | Windows 10 (x64) *Ver.1607 or later / Windows 11 (x64) / Windows Server 2016 (x64) / Windows Server 2019 (x64) / Windows Server 2022 (x64) / Windows Server 2025 (x64)   |
| Supported Devices     | LTO Single Drive : LT90H/LT80H2/LT80H/70H/70H/60H/60H/50H/50 (USB/SAS)<br>LTO Rack-Mount System : LT90H/LT80H2/LT80H/70H/70H/60H/60H/50H/50 (USB-RM/SAS-RM)<br>LTO Library UNITEK LTS Series *1 / Dual LTO Series / Flash Memory / Disk Storage / SONY Optical Disc Archive ODS-D280U *1,2 |
| Supported Media       | LTO Ultrium Cartridge (LTFs format, TAR format) / Flash Memory / Disk Storage (FAT32 / exFAT / NTFS / UDF formats are supported) / SONY Optical Disc Archive ODC3300R *1,2 / Cloud Storage (Google Drive, Amazon S3, Wasabi) *3  |

\*1 Does not support operation with NAS \*2 Optical Disc Archive optional license is required. \*3 Cloud Storage optional license is required.

# LT90H / LT80H2 / LT70H2 USB

+ Archive Software



## Overview

- You can easily build an LTO archiving environment by connecting LTO drives to the existing environment's NAS and installing the archiving software.
- With USB plug and play connection, enable maintenance without stopping the server
- USB cable clamp prevents unexpected cable disconnection
- Data can be copied to LTO tape by drag & drop
- High speed data transfer at maximum 300MB/sec
- Plug and play with USB3.0 interface
- Hardware-level encryption

## Product Specifications

Available for models other than the following 4. For details, contact us.

| Model                      | LT90H USB-ArchiveLTW<br>LT90H USB-FASTapeLTM<br>LT90H USB-ArchiveLTL<br>LT90H USB-ArchiveLTQ | LT80H2 USB-ArchiveLTW<br>LT80H2 USB-FASTapeLTM<br>LT80H2 USB-ArchiveLTL<br>LT80H2 USB-ArchiveLTQ                          | LT70H2 USB-ArchiveLTW<br>LT70H2 USB-FASTapeLTM<br>LT70H2 USB-ArchiveLTL<br>LT70H2 USB-ArchiveLTQ |
|----------------------------|--|---|--|
| Drive Type                 | LTO Ultrium9   | LTO Ultrium8  | LTO Ultrium7   |
| Interface                  | USB 3.0  |   |  |
| Capacity                   | 18.0TB (Native) / 45.0TB (2.5:1 Compression)   | 12.0TB (Native) / 30.0TB (2.5:1 Compression)  | 6.0TB (Native) / 15.0TB (2.5:1 Compression)  |
| Native data transfer (Max) | USB 3.0: 300MB/sec   |   |  |
| OS support                 | Windows / Mac / Linux  |   |  |
| Dimensions (mm)            | 213(W) × 370(D) × 58(H)mm *Main body only (excluding protruding parts)                       |   |  |
| Power Consumption          | 55VA   | 65VA  |  |
| Weight                     | 4.5Kg  |   |  |
| Kit Contents               | LTxxH USB-ArchiveLTW   | LTO Tape Drive, USB 3.0 cable, Cleaning Cartridge, User Guide (English), ArchiveLT Standard for Windows License (English) |  |
|                            | LTxxH USB-FASTapeLTM   | LTO Tape Drive, USB 3.0 cable, Cleaning Cartridge, User Guide (English), FASTapeLT for MacOSX License (English)           |  |
|                            | LTxxH USB-ArchiveLTL   | LTO Tape Drive, USB 3.0 cable, Cleaning Cartridge, User Guide (English), ArchiveLT for Linux License (English)            |  |
|                            | LTxxH USB-ArchiveLTQ   | LTO Tape Drive, USB 3.0 cable, Cleaning Cartridge, User Guide (English), ArchiveLT QNAP License (English)                 |  |
| Optional Equipment         | LTO Ultrium9 Data Cartridge, USB 3.0 Type-C cable  | LTO Ultrium8 Data Cartridge, USB 3.0 Type-C cable   | LTO Ultrium7 Data Cartridge, USB 3.0 Type-C cable  |

## LTO [Linear Tape-Open]

- International standard magnetic tape media.
- Ideal medium for long-term storage of data that combines high-capacity, low-cost, 50-year durability, energy saving, and safety
- LTO-9 offers up to 45TB of data storage.
- Medium is expected to be supplied for a long time, with a technical roadmap released to LTO-14 in the future.
- With offline shelf management, stored data can be increased to infinity, with zero power consumption, and air gaps can be built to protect data from cyber attacks.



**UNITEX**

### UNITEX Corporation

【 Head office 】 2-2-4 Nakamachi, Machida-shi, Tokyo 194-0021, Japan  
【 TEL 】 +81-42-710-4630 【 FAX 】 +81-42-710-4660  
【 MAIL 】 [wwsales@unitex.co.jp](mailto:wwsales@unitex.co.jp)  
【 WEB 】 <https://www.unitex.co.jp/en/>

Catalog List ▼



25110100